

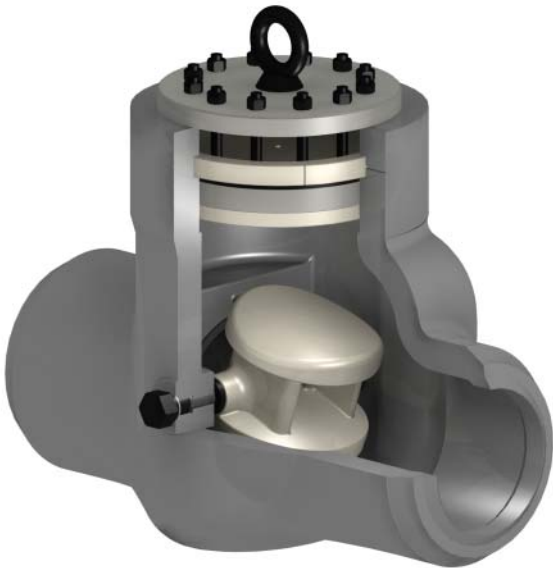
## CHECK VALVES

## TILTING DISC TYPE PRESSURE SEAL BONNET

This type of valve (also called “equilibrated disc non return valve”) is coupled with on-off valves in high pressure lines to protect the system from the fluid reversing flow, when regular flow is stopped.

The characteristic of this valve is “non slamming”. The disc, with its shape, is maintained in the open position by the fluid flow and its return to closed position does not cause a sudden violent hit against the seat. Design can be to ASME B16.34 but, also, to EN 12516.

Cast body construction and forged body construction are both available. Materials range from carbon steel to low alloy steel (including the widely used modified 9% Cr alloys) to austenitic stainless steels, to nickel alloys. Pressure classes (per ANSI standard) are normally ranging from 600# to 900#, 1500# and 2500#. Size range depends on pressure class requirements, FLUITEK ORSENIKO VALVES having no limits in relation to market requirements.



The table shows a typical example of check valves class 1500#. Sizes are indicated, but not limited to, for the most used range.

CHARACTERISTICS - ANSI 1500#					
Nominal Size [inches]	Pressure Class	Bore diameter [mm]	End to end BW [mm]	From center line to top [mm]	Total weight [kg]
3"	1500	70	305	200	57
4"	1500	92	406	241	70
6"	1500	136	559	351	135
8"	1500	175	711	380	250
10"	1500	216	864	552	582
12"	1500	264	991	680	980
14"	1500	289	1067	735	1250
16"	1500	330	1194	860	1970
18"	1500	371	1346	900	2415
20"	1500	416	1473	1012	3600
24"	1500	480	1625	1140	4350
>24"	On Application				